



SCHUSTER
• BOARDING HOUSE •



WHERE STYLE MEETS THE ART OF HOSPITALITY
AT THE GRANDEST BOUTIQUE HOTEL IN THE COUNTRY

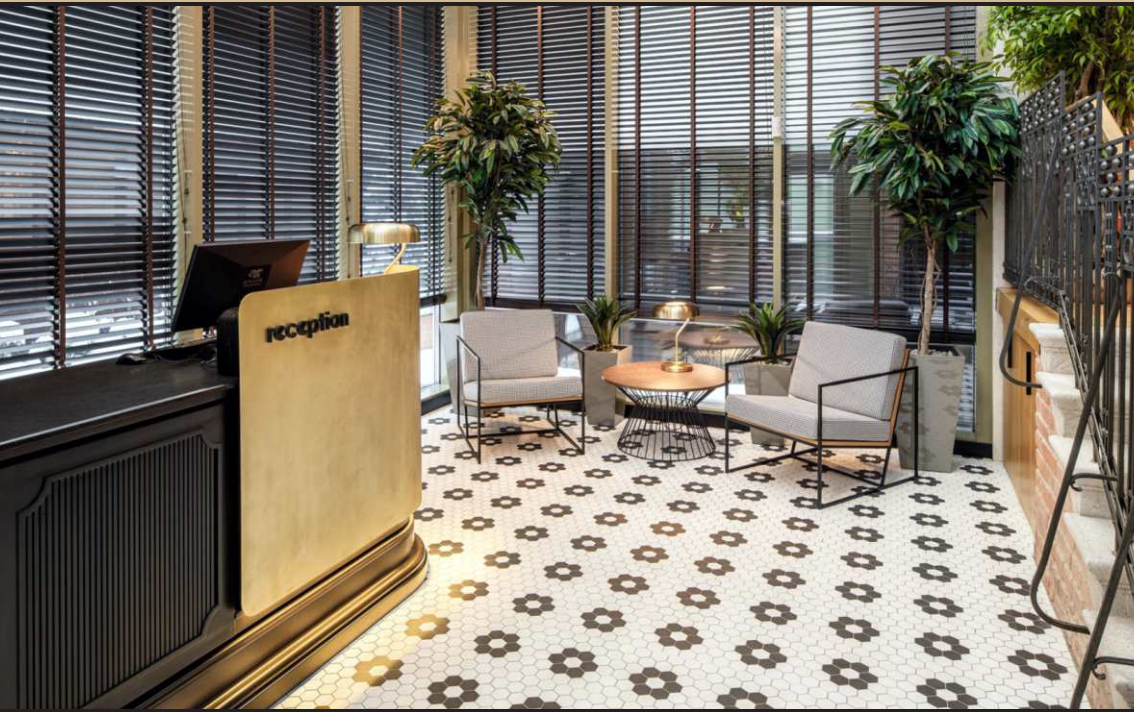


Schuster Boarding House is a boutique hotel located in the heart of the historic center of Braşov, in a quiet area, only a few steps away from the most interesting tourist attractions of the city at the foot of Tâmpa.

The hotel building was constructed by renowned Austrian and Hungarian architects between 1912 and 1914 in an Art Nouveau architectural style with Viennese secession influences specific to the early twentieth century.

After an extensive restoration process, important pieces of the old establishment were saved, such as the exterior windows and the carpentry elements inside and outside the building. As a result, hotel guests can admire the architectural beauty, historical witnesses and impressive decoration elements that carry the visitors on an imaginary journey back in time...





The entrance to the hotel is through the reception, a room that boasts a contemporary design with loft style influences thanks to the high ceiling, the brick wall with a specific texture reminiscent of the structure of the original building and many other details that coexist harmoniously. The reception abounds in natural light due to the glass windows, while the high ceiling offers the right acoustics for subtle piano chords that stimulate the senses in the most unique way.

The hotel also displays a lavish lobby, a place dedicated exclusively to relaxation, dimly lit to create a more intimate atmosphere.



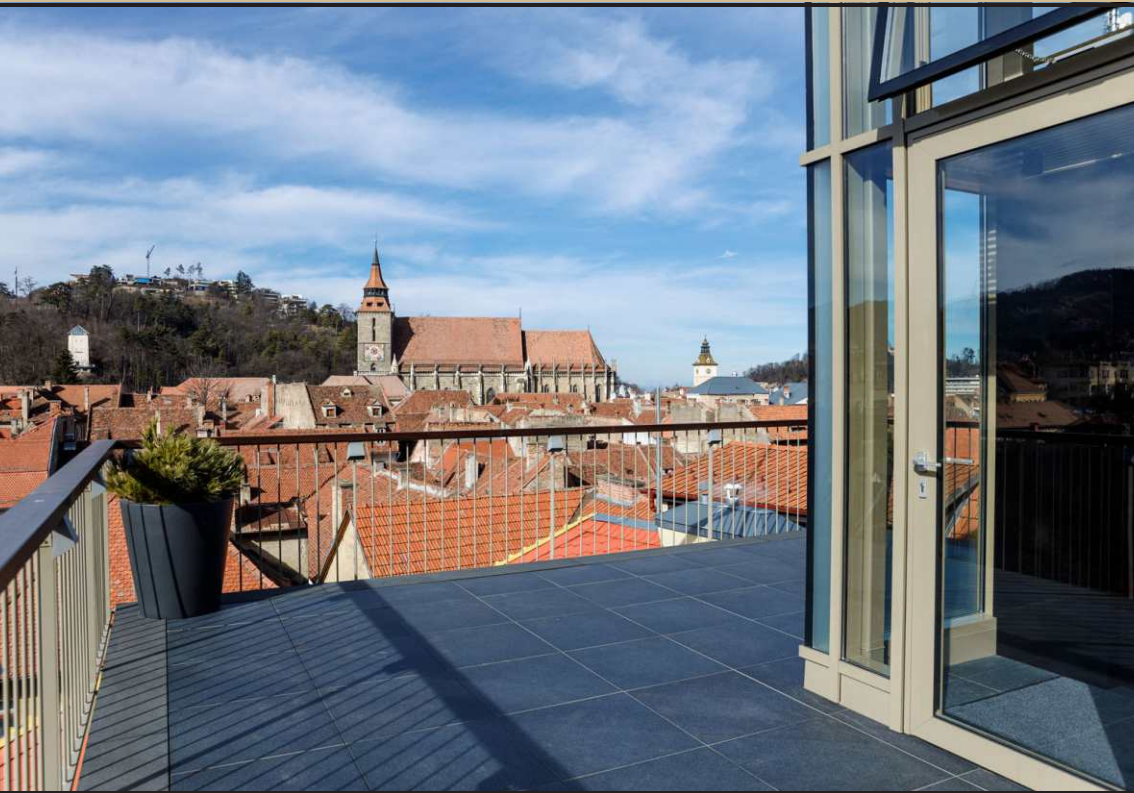


The dining area is another focal point when it comes to hotel attractions. Breakfast serves both traditional and international cuisine. The hotel will launch an "À la Carte" menu that will complete the culinary experience taking the art of dining to the next level.



The four floors of the building offer 22 rooms, including: 1 Premier Deluxe Suite room, 5 Junior Suite rooms, 1 Deluxe Junior Suite room, 7 Standard Double rooms, 4 Double Executive rooms, 2 Deluxe Double Executive rooms, a Double Standard Twin room, and a Single room.





At the same time, the hotel is provided with a spacious elevator that serves all 4 floors, including the terrace located on the roof, which guarantees a 360-degree view of the Braşov Fortress.



In terms of facilities, the hotel has an ambient lighting system that provides indirect light specific to Art Nouveau buildings. Carefully placed lighting sources reveal the details of the hotel in a refined note, emphasizing the elegance of each space.

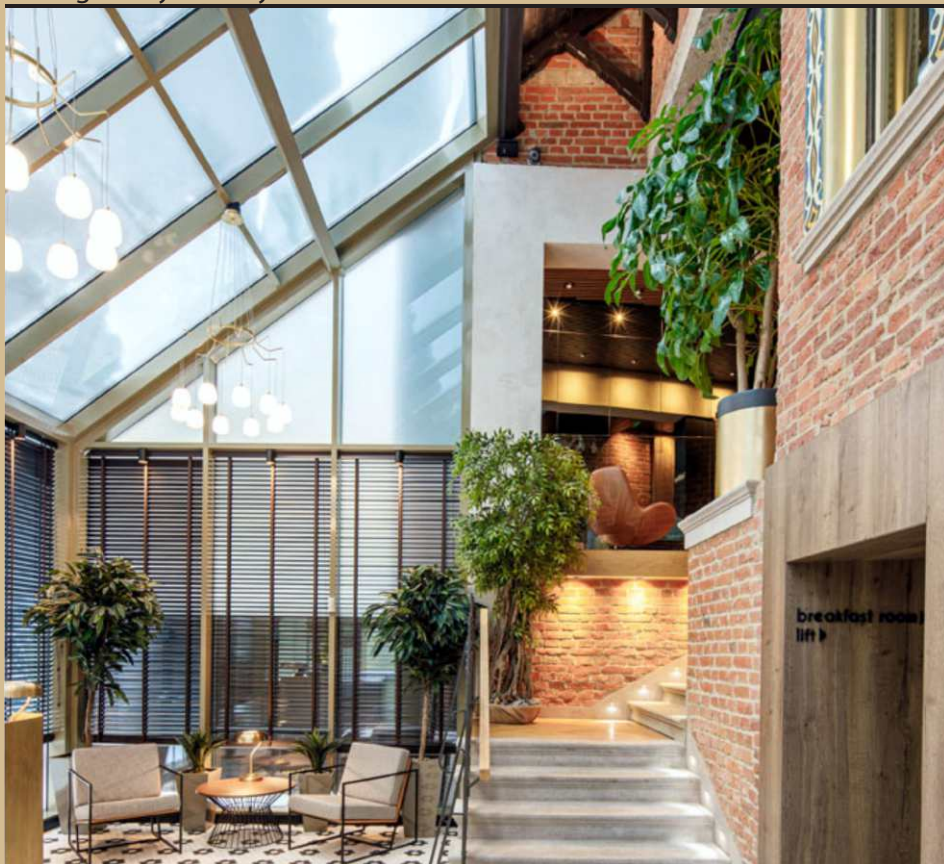
High-performance sound systems are located in the reception, rooms, halls, and also in the lobby and dining area. This provides a high-quality acoustic experience thanks to the latest technology.

The rooms are in turn equipped with smart panels from where you can control the lighting sources individually for a unique experience and a more intimate atmosphere, and at the same time you can adjust the temperature according to your preferences.

Because we understand technological progress and because we want our guests to have a premium experience, we have invested in shower systems that provide water with perfect pressure making showering comforting, fulfilling the expectations of the most demanding guest. Another feature that places us at the top of the hotel industry is the intelligent air filtration system, so we constantly introduce fresh, filtered air inside the hotel.



If you are looking for a quiet, sophisticated hotel with a spectacular design that evokes elegance and refinement, Schuster Boarding House is the right place for you. Whether you are in the city on a business trip or you are looking for a pampering paradise for your vacation, hotel facilities, unique design, hospitality services and refined atmosphere will accompany you throughout your stay.





SCHUSTER

• BOARDING HOUSE •

instagram



facebook



site



500015 Braşov, str. Peneş Curcanul nr. 5

Tel. +40 (0)368 440 440

e-mail: office@schusterhotel.ro

www.schusterhotel.ro